



**Annual Meeting
Club Amical – St. Adolphe
June 10th, 2015 - 7 pm**



15th Annual Meeting Agenda
June 10th, 2015 – 7:00 pm
Club Amical – St. Adolphe

Eligible voters: Board Members and any other paid memberships.
Agenda and minutes will be distributed.

1. Welcome
2. Call to Order
3. Adoption of Revised Agenda
4. Adoption of Minutes (May 15th, 2014)
5. Adoption of Financial Report
 - a. Waive audit
 - b. Appoint 3rd party
6. President's Report : Murielle Bugera
7. Guest Speaker: Ian Hughes, Trails Manitoba
8. Elections
9. Q & A
10. Adjournment



Crow Wing Trail

MINUTES OF LAST AGM

May 15th, 2014 (reverse side of agenda)



Crow Wing Trail

FINANCIAL REPORT

Financial Statements Reviewed by 3rd party

Motions for waiving of audit/3rd party for 2015

Patricia Pidlaski CMA
P.O. Box 590
St.Malo, MB R0A 1T0

April 23, 2015

Crow Wing Trail Association
P.O. Box 268
St. Pierre-Jolys, MB R0A 1V0

To Board of Directors:

I have prepared the financial statements for the Crow Wing Trail Association for the year ending December 31, 2014 based on the information provided to me.

Sincerely,

A handwritten signature in cursive script that reads "P. Pidlaski".

Patricia Pidlaski CMA

Crow Wing Trail Associatiion
 Chemin St-Paul Inc.
 Balance Sheet
 December 31, 2014

| | 2014 | 2013 |
|---|--------------|---------------|
| Assets | | |
| Current Assets | | |
| Cash-Operating Account | \$ 4,161 | \$ 9,927 |
| Cash-Projects Account | \$ 3,158 | |
| Share | 5 | 5 |
| GST Receivable | 447 | 116 |
| Grant Receivable | 450 | |
| Total Current Assets | 8,221 | 10,049 |
| Other Assets | | |
| Trail Maintenance Equipment | 1,766 | 1,766 |
| Total Other Assets | 1,766 | 1,766 |
| Total Assets | \$ 9,987 | \$ 11,814 |
| Liabilities & Equity | | |
| Liabilities | | |
| Advance-Grant for RRFN Development Plan | \$ 2,400 | \$ 450 |
| Trail Sub Accounts | | |
| Ritchot | 129 | 129 |
| De Salaberry | 1,005 | 1,179 |
| St-Pierre-Jolys | 73 | 73 |
| Total Liabilities | 3,608 | 1831 |
| Equity | | |
| Retained Earnings | 9,983 | 6,202 |
| Net Income | -3,604 | 3,781 |
| Total Equity | 6379 | 9983 |
| Total Liabilities & Equity | \$ 9,987 | \$ 11,814 |

Crow Wing Trail Association
 Chemin St-Paul Inc.
 Income Statement
 January 1, 2014 to December 31, 2014

| | 2014 | 2013 |
|-----------------------------------|-------------------|-------------------|
| Revenue | | |
| Operating Revenue | | |
| Donations | \$190 | \$50 |
| Memberships | | |
| Individual/Family | 100 | 220 |
| Community/Organizations | 100 | 300 |
| Municipal/Local Government | <u>1,800</u> | <u>639</u> |
| Total Memberships | 2,000 | 1,159 |
| Other Revenue | <u>300</u> | <u> </u> |
| Total Operating Revenue | 2,490 | 1,209 |
| Trail Maintenance Revenue | | |
| MRTA Refunds | | 157 |
| MRTA Grant | 1,090 | 5,000 |
| Other Trail Maintenance Grants | 5,000 | 3,091 |
| From Trail Maintenance Subaccount | <u>173</u> | <u> </u> |
| Total Trail Maintenance Revenue | 6,263 | 8,248 |
| Other Revenue | <u> </u> | <u>4,270</u> |
| Total Revenue | \$8,753 | \$13,727 |
| Expenses | | |
| Operating Expenses | | |
| Advertising | | \$1,480 |
| Office Supplies/Advertising | \$395 | |
| Annual Fees | 75 | 75 |
| Marketing | 801 | |
| Web Site | <u>186</u> | <u>513</u> |
| Total Operating Expenses | 1,457 | 2,068 |
| Trail Maintenance Expenses | | |
| Pilot Project | 4,611 | 3,661 |
| Signs and posts | 490 | 157 |
| Other Trail Maintenance Costs | <u>5,800</u> | <u>0</u> |
| Total Trail Maintenance Expenses | 10,900 | 3,818 |
| Other Expenses | <u> </u> | <u>4,060</u> |
| Total Expenses | 12,357 | 9,946 |
| Net Income (Deficit) | -\$3,604 | \$3,781 |



Crow Wing Trail

PRESIDENT'S REPORT



Crow Wing Trail

One Year Ago



Guest: Minister of Healthy Living and Seniors





Crow Wing Trail

Recommendations

1. Continue maintenance with Trail Boss **2014**
2. Secure increased/ongoing funding **2015**
3. Better communication Board/RM Councils **2015**
4. Partner with RM's for infrastructure needs **2015**
5. Clarify process for hiring labor
6. Build relationship with MB Floodway Authority **2014**
7. Plan to secure long-term access to land
8. Consider changes to existing trail carefully **2014**
9. Improve trail amenities **2015**
10. Develop local ATV strategy
11. Develop trail maintenance reporting system **2015**
12. Develop Board manual
13. Develop detailed trail map **2015**





Crow Wing Trail

Trail Maintenance

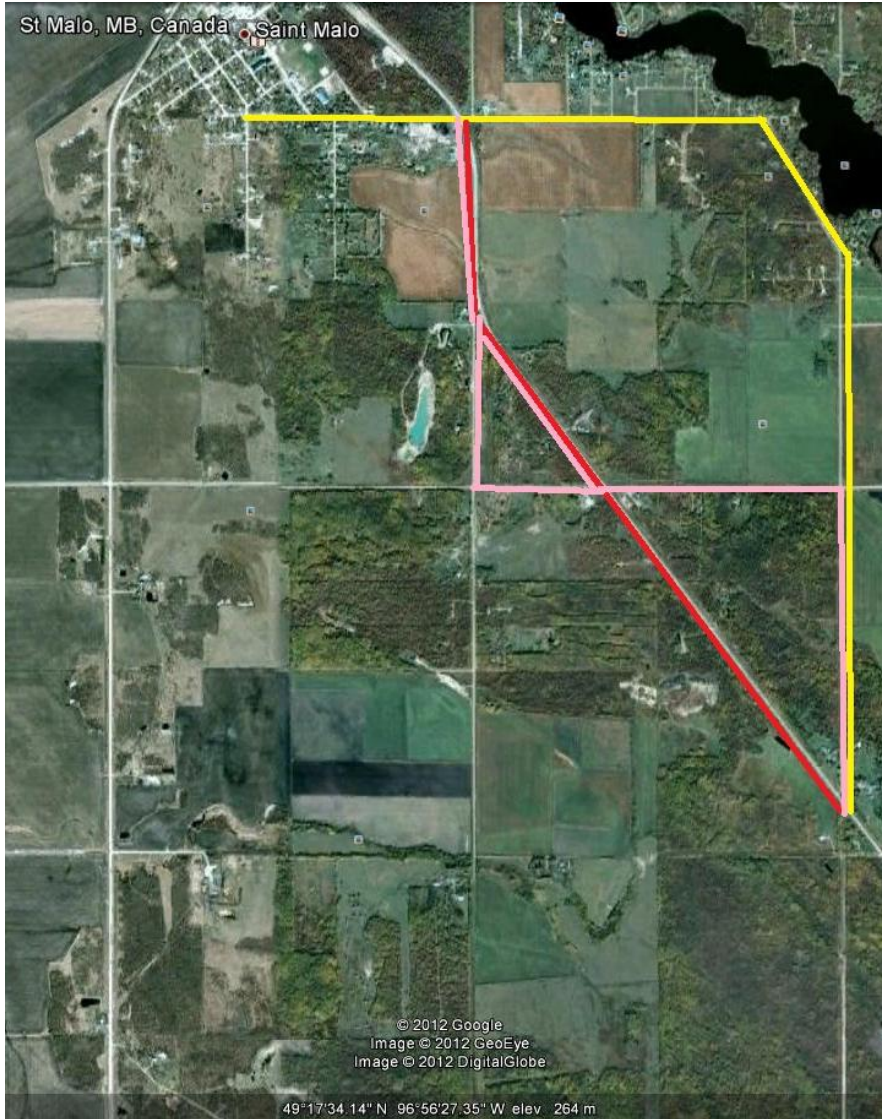


Mid-June to End of August



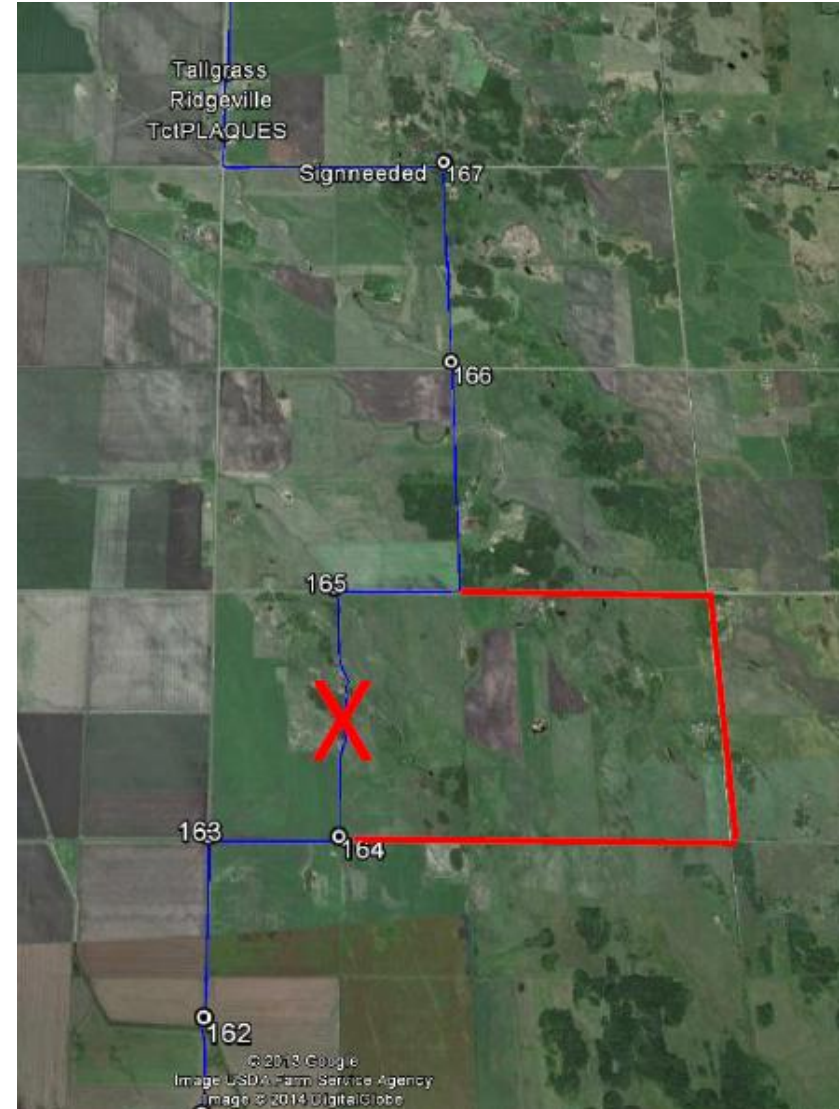
Crow Wing Trail

South of
St. Malo



South of
Ridgeville

Re-Routing





Crow Wing Trail

Refurbishment Project



**Upgrading road allowance , south of
RM of De Salaberry Municipal Dump.**



Crow Wing Trail

[Link to Winnipeg](#)



Shapansky Rd to Floodway

Crossing floodway under
St. Mary's Road Bridge



Promotion

CROW WING TRAIL
CHEMIN ST-PAUL

Crow Wing Trail

search

Home The Trail Feedback Events Photos Videos Miscellaneous Support the Trail The Association

EMPRUNTEZ CETTE ANCIENNE PISTE POUR CHARS À BŒUFS. IL ÉTAIT AUTREFOIS LE PRINCIPAL CHEMIN ENTRE LE FORT GARRY

14,224 visits since going live in April 2014.

Register for Blogs News as they are posted.

Pay membership or make a donation via PayPal.



- Home
- The Trail
- Feedback
- Blogs
- Events
- Photos
- Videos
- Did You Know?
- Support the Trail
- The Association

- Memberships
- Donations/Meter Sales
- Virtual Donor Wall**

Thank you to all the donors who support the Crow Wing Trail Association in its endeavors. This is a... out and flavor.
Monies raised go towards the maintenance, marketing and interpretation of the Crow Wing Trail. A... available through
our annual meeting documentation.

Bridge Planks: There are 3 bridges on the Crow Wing Trail that bear the names of those who purchased planks to help raise funds for the construction of these important links: (1) Senkiw Suspension Bridge (2) St. Malo Volunteer Bridge to St. Malo Provincial Park (3) Frog Pond Bridge in Parc Carillon, St-Pierre-Jolys.

The following have purchased metres of the Crow Wing Trail from 1999 to 2004. Monies were used to help with the building of the trail. We are now actively selling metres to help with the ongoing maintenance and promotion of the trail.

TOWN OF EMERSON

Altona Credit Union - 120 METRES

Pohl, Vera L. - 2 METRES

RM OF FRANKLIN

Sawatzky, Randy & Maureen

RM OF DE SALABERRY

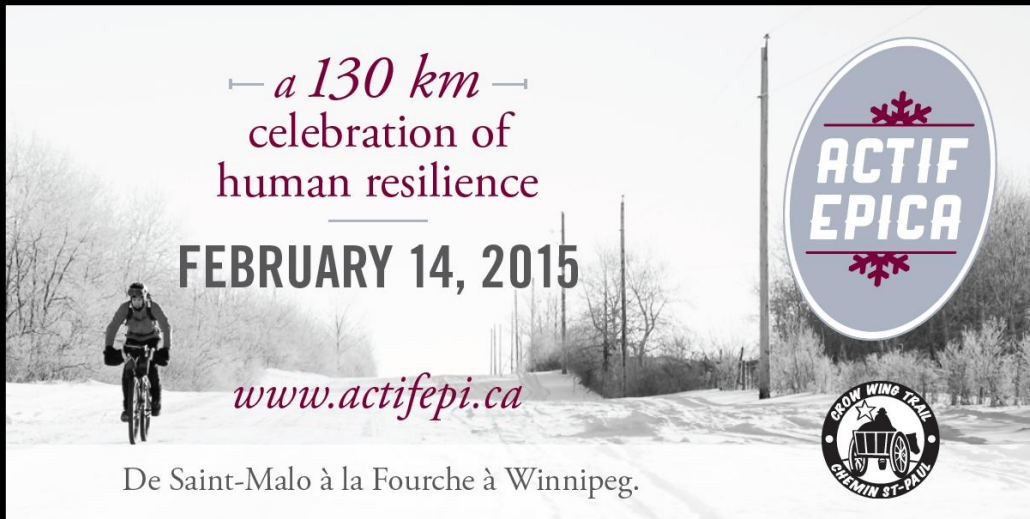
veterans - 10 METRES

Those who buy metres of trail have their names listed on the virtual donor wall.



Crow Wing Trail

Promotion





— a 130 km —
celebration of
human resilience

FEBRUARY 14, 2015

www.actifepi.ca

De Saint-Malo à la Fourche à Winnipeg.



Cooperative marketing with
Eastman Tourism Association



CROW WING TRAIL / CHEMIN ST-PAUL
EXPLORE THE TRANS CANADA TRAIL



Explore the trail... Hike, Bike, Ski or Ride
Empruntez le Sentier pour y
pratiquer randonnée, vélo, ski ou équitation

Connecting
Winnipeg to Emerson
De Winnipeg à
Emerson...



LOOK FOR THE SIGNS
www.crowwingtrail.ca



Start Fresh!
Commencez votre voyage d'été
avec fraîcheur.



Nouveau départ!
Partez en vacances, découvrez et vivez l'été
avec fraîcheur.



Trans Canada Trail
Sentier Transcanadien



Crow Wing Trail

Promotion

TIAC  AITC

**Nominated by Travel Manitoba
For a Canadian Tourism Sustainable Tourism Award
Winner: Eagle Wing Tours of Victoria, B.C.**



Crow Wing Trail

Promotion



**Actif Epica nominated by CDEM and Winner of:
Travel Manitoba Event of the Year Award - Under \$5,000**

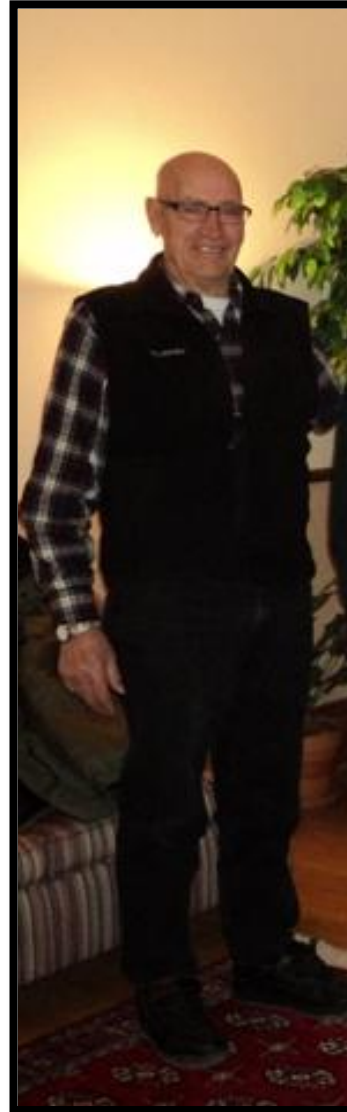
The municipal elections in the fall brought several changes to our Board.

The one that was most felt was the departure of Peter Friesen, an RM of Franklin councillor, with the Crow Wing Trail from the beginning.

We also lost one municipal entity to amalgamation.

Today's Board is made up of:

Ron Mamchuk and Marianne Curtis - RM of Ritchot; Libby Hanna - Town of Niverville; André Carbonneau and Steven Graupner - RM of De Salaberry; Wayne Arseny and Georges Beaudry – RM of Emerson-Franklin; Charlie Nelson and Violet Caibaiosai – RRFN; and myself – Village of St-Pierre-Jolys.



Crow Wing Trail





Crow Wing Trail

2015 PLANS



Crow Wing Trail

Trail Maintenance



NTC • CNS

NATIONAL TRAILS COALITION

COALITION NATIONALE SUR LES SENTIERS

\$7,460 for increased maintenance:

- Less short cuts: mowing and putting up signs
- Repairing bridges and stairs
- Smoothing out trail along Canada-U.S. border
- Purchase of first Trans Canada Trail signs on provincial roads.





Crow Wing Trail

Communication with Councils

Presentations to all municipal councils

Done:

1. RM of De Salaberry ✓
2. Roseau River First Nation ✓

To Do:

1. Village of St-Pierre-Jolys
2. RM of Emerson-Franklin
3. RM of Ritchot
4. Town of Niverville





Crow Wing Trail

Roseau River Development Plan

A recent meeting with Chief and Council has resulted in a stronger relationship.

We hope to move ahead soon with a plan for the development of the section of the Crow Wing Trail that passes through Roseau Rapids.

The ultimate goal is to help trail users understand, respect and participate in the Anishinabe way of life.





Crow Wing Trail

Promotion

DÉCOUVREZ LA JOIE DE VIVRE DU Manitoba

UN SENTIER À SUIVRE À LA TRACE

Le marcheur Dana Melse, a entrepris de traverser le Canada à pied, foulant le Chemin Saint-Paul (Crow Wing Trail), la parcelle manitobaine du sentier transcanadien qui traverse, entre autres, les villages de Saint-Malo, Saint-Pierre-Joy et Saint-Adalphe. Une traversée et un témoignage de sa part qui en dit long sur le Manitoba.

Le sentier Saint-Paul est d'une qualité rare. D'abord son entretien de qualité permet d'en faire une piste cyclable très agréable reliant tous les villages. De telles balades à travers les Prairies situées au beau milieu de villages pittoresques aux belles églises ou aux belles parcs attirent de nombreuses familles pour une forme de tourisme plus écologique et naturelle. Les panneaux qui jalonnent le sentier fournissent des informations historiques, culturelles ou géologiques très riches pour les passants.

Il y a aussi beaucoup à apprendre culturellement sur ces villages, ajoutez-ils. Les gens de ces communautés rurales ont un sens de la préservation de l'histoire et de la culture unique qui mérite d'être découvert. Les habitants prennent soin les uns des autres et c'est très agréable à voir. On peut constater ici une véritable communion entre communautés francophones et anglophones. Le fait d'être anglophone ne m'a pas empêché d'être accueilli à bras ouverts et comme jamais je ne l'ai été par des familles francophones.

Le Manitoba est pour beaucoup de gens une province de passage, mais je pense que cette idée préconçue n'a pas lieu d'être, explique Dana Melse.

L'histoire y est très forte, la chaleur des gens y est incomparable et l'accueil y est unique.

trailsmanitoba.ca

joiedevivremanitoba.com

crowwingtrail.ca

Partnership with Eastman Tourism and CDEM for our presence in the English and French versions of Canadian Geographics.

trailsmanitoba.ca

crowwingtrail.ca

Imagine, stepping back in time, battling the elements for the survival of a developing country. Take a journey on the Crow Wing Trail and see what our Metis culture would have seen in the early 1800's, feel the elements on your skin and know that you are following a path to one great country.



Crow Wing Trail

Promotion



GEOCACHING

Use of tokens for promotion,
recognition and geocaching.





Crow Wing Trail

Promotion

Partnership with:

- CDEM
- Rivers West
- Eastman Tourism
- ORoseau
- Morris Royal Canadian Cadet Corp.

For the development of a horse-drawn tour on the Crow Wing Trail from St. Malo to Emerson.

This tour would be promoted by Travel Manitoba among others.





Crow Wing Trail

Trail Improvements

Partnership with Morris Royal Canadian Cadet Corp. to assist us with:

1. Improving trail amenities i.e. camping areas
2. Set up trail reporting system to assist maintenance
3. Develop GPS trail map to assist maintenance and inform trail users





Crow Wing Trail

Sustainability

Discussions on how to be more than a trail i.e. byways in U.S. , to make us more sustainable.

Purpose is to preserve and protect an area, and promote its tourism and economic development.

The area must have cultural, archeological, historical, natural, recreational and/or scenic properties.





15th Annual Meeting Agenda
June 10th, 2015 – 7:00 pm
Club Amical – St. Adolphe

**Eligible voters: Board Members and any other paid memberships.
Agenda and minutes will be distributed.**

1. Welcome
2. Call to Order
3. Adoption of Revised Agenda
4. Adoption of Minutes (May 15th, 2014)
5. Adoption of Financial Report
 - a. Waive audit
 - b. Appoint 3rd party
6. President's Report : Murielle Bugera
7. Guest Speaker: Ian Hughes, Trails Manitoba
8. Elections
9. Q & A
10. Adjournment



Elections

- By-Laws: 3 to 14 Board Members
- Alternate 1 and 2 years
- Up for re-election: (Motion needed)
 - Wayne Arseny, Marianne Curtis
 - New nominations
- Term up in 2016:
 - Charlie Nelson, Violet Caibaiosai, Murielle Bugera, Georges Beaudry, André Carbonneau, Ron Mamchuk, Libby Hanna



Crow Wing Trail



THANK YOU ALL!

SEE YOU NEXT YEAR